

9th Annual Jarvis-Kern MORC STN. 26 Doublehanded Race
Saturday, July 30, 2016
SAILING INSTRUCTIONS

1 RULES

- 1.1 The race will be governed by the 'rules' as defined in The Racing Rules of Sailing.
- 1.2 The prescriptions of the Canadian Yachting Association (CYA) will apply.
- 1.3 The use of Autohelm is permitted for this race.

2 ELIGIBILITY AND ENTRY

This race is open to all skippers and crew who wish to sail in a double handed "FUN" race.

3 NOTICES TO COMPETITORS

- 3.1 Notices to competitors will be posted on the official notice board at SYC.

4 CHANGES TO SAILING INSTRUCTIONS

- 4.1 Any change to the sailing instructions will be posted before 0700 on the day it will take effect.

5 SIGNALS MADE ASHORE

- 5.1 Signals made ashore will be displayed at SYC Race Committee Building.
- 5.2 When flag AP is displayed ashore, '1 minute' is replaced with 'not less than 45 minutes' in race signal AP (Modifies Rule Race Signals).

6 SCHEDULE OF RACES

- 6.1 The scheduled time of the warning signal for the race is 0900.

7 CLASS SPLITS

- 7.1 Final splits will be announced at the skippers meeting following registration on July 30, 2016 at 8:00 pm

8 THE COURSES

- 8.1 The diagram in Appendix 1 show the courses, including the approximate angles between legs, the order in which marks are to be passed, and the side on which each mark is to be left.
- 8.2 The approximate course length will be 22 NM.
- 8.3 If conditions dictate, the course may be shortened to an approximate course length of 14 NM by the race committee and will be indicated by the code flag S displayed on the Race Committee boat.

9 MARKS

- 9.1 Mark F is a 4' diameter yellow ball marked with a black letter. Mark B is a 4' diameter yellow ball marked with a black letter. R-2 is a red channel navigation buoy. The Blue Point mark is an inflatable orange pyramid buoy.

9.2 Marks that are damaged but still visible are still to be considered proper marks. Marks that are missing or substantially off-station may be replaced by marks that meet one of the following conditions

(Modifies RRS 34):

- (a) 4' diameter white or yellow ball with no letter identification.
- (b) A buoy or stake-boat displaying an M Code Flag.
- (c) An inflatable orange (or other color) pyramid buoy.

- 9.3 The short course mark will be an inflatable yellow pyramid buoy at approximately N43

04.416 W82 16.287

10 THE START

10.1 Starting signals will be made at five-minute intervals. Each signal will be removed one minute before the next is raised. Warning: Yellow Flag, One Sound. Preparatory: Blue Flag, One Sound. Start: Red Flag, One Sound. This changes RRS 26. Times will be taken from the visual signals; absence of a sound signal will be disregarded.

10.2 Boats whose warning signal has not been made shall avoid the starting area extending 500' behind the starting line and all boats whose warning signal has been made.

11 THE FINISH

11.1 The finishing line will be the R-2 navigation buoy to starboard and the red stripe on the SYC race shack to port.

11.2 After finishing, boats shall not obscure the Race Committee's vision of the finish line and stay clear of boats still racing. Boats shall not re-cross the finish line with sails up after finishing.

11.3 Boats shall record their finish times, and the boat immediately ahead and astern. Times should be reported to the Race Committee if requested.

11.4 The US Coast Guard has advised PHYC and SYC that some commercial traffic may be under escort through the St. Clair River and the Lake Huron shipping channel out to #11 & #12 buoys. Skippers are reminded that all larger commercial vessels have the right-of-way in these areas and must use caution when approaching or crossing the channel when a freighter is present, especially at #2 Buoy when finishing a race.

12 TIME LIMITS

12.1 There will be no time limit.

12.2 Boats that finish after 1800 will take their own finish time. Upon docking, the finish time shall be reported to the Race Committee.

13 PROTESTS AND REQUESTS FOR REDRESS

13.1 Protest forms are available at the SYC Race Committee Race building or PHYC Clubhouse. Protests shall be delivered to the Judge's Committee, the Race Chairmen, or the Principal Race Officer within the protest time limit.

13.2 The protest time limit is 2 hours after the finish time of the protesting yacht.

13.3 Protest hearing will be held as soon as a committee can be convened.

14 SCORING

14.1 The Low Point scoring system of RRS Appendix A will apply.

15 SAFETY REGULATIONS

15.1 Each yacht racing, depending on country of registration, shall comply with US or Canadian Coast Guard requirements.

15.2 Every effort **MUST** be made to avoid interference with Great Lakes Shipping.

15.3 Yachts retiring from a race must identify themselves to the Race Committee as soon as possible using VHF 69, failing that, immediately after arriving ashore by calling 519-332-6779 extension #6.

16 EQUIPMENT AND MEASUREMENT CHECKS

16.1 A boat or equipment may be inspected at any time for compliance with the sailing instructions.

17 RADIO COMMUNICATION

17.1 The Race Committee may monitor and use VHF 69 to hail sail numbers of infringing yachts. Failure to do so will not be grounds for redress.

17.2 It is strongly recommended that all yachts monitor communications on VHF 16 & 69 while racing.

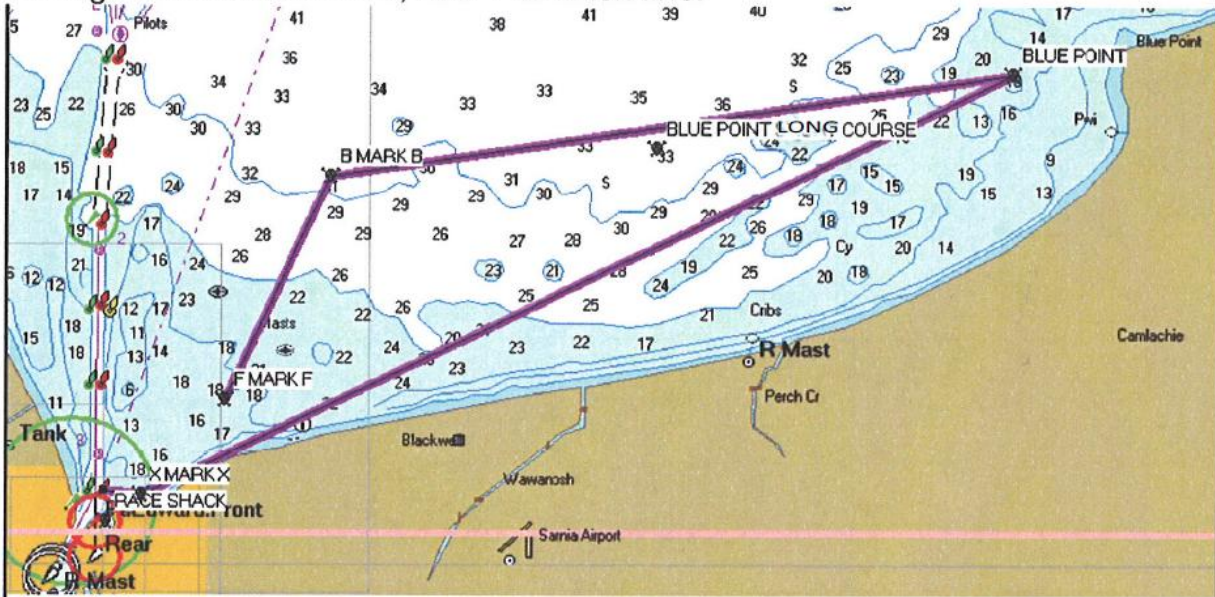
Appendix 1 Blue Point Course

1st leg – 2.8 nautical miles, 25°T to “B” Mark rounded to starboard.

2nd leg – 8.41 nautical miles, 80°T to Blue Point mark
approximate coordinates 43°05.25'N, 82°10.77'W,
rounded to starboard.

3rd leg - 10.5 nautical miles, 242°T to “X” mark, rounded
to starboard.

4th leg - 0.5 nautical miles, 270°T to finish line.



Short Course

1st leg – 2.8 nautical miles, 25°T to “B” Mark rounded to starboard.

2nd leg – 3.7 nautical miles, 85°T to Short Course mark
approximate coordinates N43 04.416 W82 16.287,
rounded to starboard.

3rd leg – 7.04 nautical miles, 236°T to “X” mark, rounded
to starboard.

4th leg - 0.5 nautical miles, 270°T to finish line.

